

**Legend**

- 1st Class: no restrictions (349853 ha)
- 2nd Class: possible after review (55806 ha)
- 3rd Class: major restrictions (722221 ha)
- 4rd Class: protected areas (332680 ha)



Ministry of Environmental  
Protection and Regional  
Development  
Republic of Latvia



LAKE AND PEATLAND RESEARCH CENTER

**Dagnis Dubrovskis**

Deputy State Secretary for Climate Policy  
Ministry of Environmental Protection and Regional  
Development of the Republic of Latvia

**Ilze Ozola**

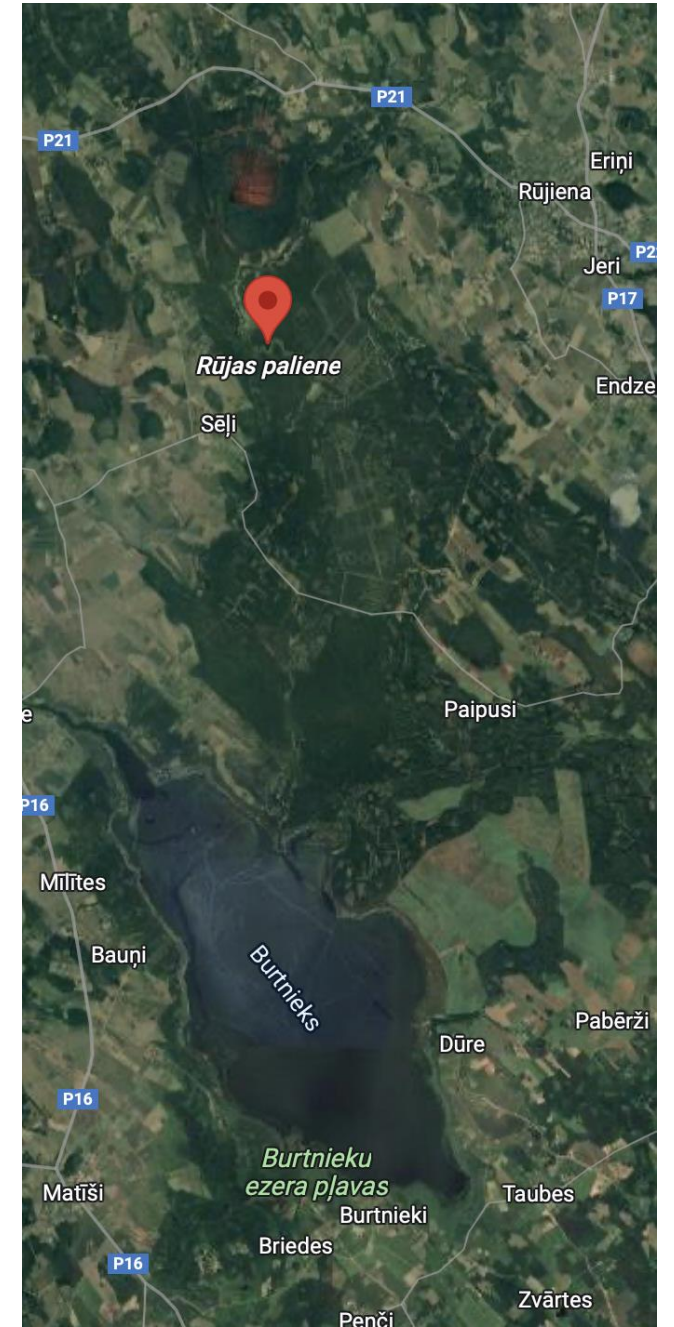
Project Manager, peatland expert  
Lake and Peatland Research Center

Greifswald  
20.09.2022





Emissions from organic soils = emissions equal to transport sector in Latvia





Focus on wet meadows and reed canary grass – already known management of wet organic soils in Latvia.

