



Welcome to Greifswald

Foto: Christoph Schaller

Step by step

- Concept for climate protection 2010
- „Masterplan Klimaschutz“ 2017 covering the fields
- Additional citizenship resolutions



© Pixabay.com



Universitäts- und Hansestadt
Greifswald



© Stadwerke Greifswald



© GREIFSWALD MARKETING GMBH



Photo: Stefan Dinse



Photo: Christoph Schaller

Greifswald on transformation path



Universitäts- und Hansestadt
Greifswald

communication and building up cooperation structures: internal and external (ex.: experts, tenants, administration, government agency...)

analysis of current state
peatland study I+ II
groundwater monitoring

strategy development
climate funds Greifswald
supporting development of value chain



create (local) awareness for peatlands and its role in climate adaptation, carbon storage...

projects
from planning to permission and rewetting
financial background, funding and value



Foto: Torsten Bittner



Thinking of peatlands...





Greifswalder Moore - Vegetationsausprägung

Legende

-  Stadtgrenze
- Vegetation**
-  Moorgrünländer
-  Röhrichte
-  Großseggen-Riede
-  Salzgrasländer
-  Salzlöhrichte
-  Moorwälder
-  Offenes Wasser
-  Vegetationsloser Torf

Datengrundlage:
 Moore laut KBK25 (Stand: 11/2016), LUNG.
 Küstenüberflutungsmare in M-V (Stand: 11/2017), LUNG.
 Stadtgrenze Amt Greifswald (Stand: 01/2018), UHGW.
 Digitales Geländemodell (DGM2, Stand: 2018), UHGW.
 Digitale Orthophotos (Stand: 2015), Geoportal M-V (WMS).
 Eigene Kartierung (2018).

Bearbeiter:
 Felix Reichelt, Stand: 21.11.2018

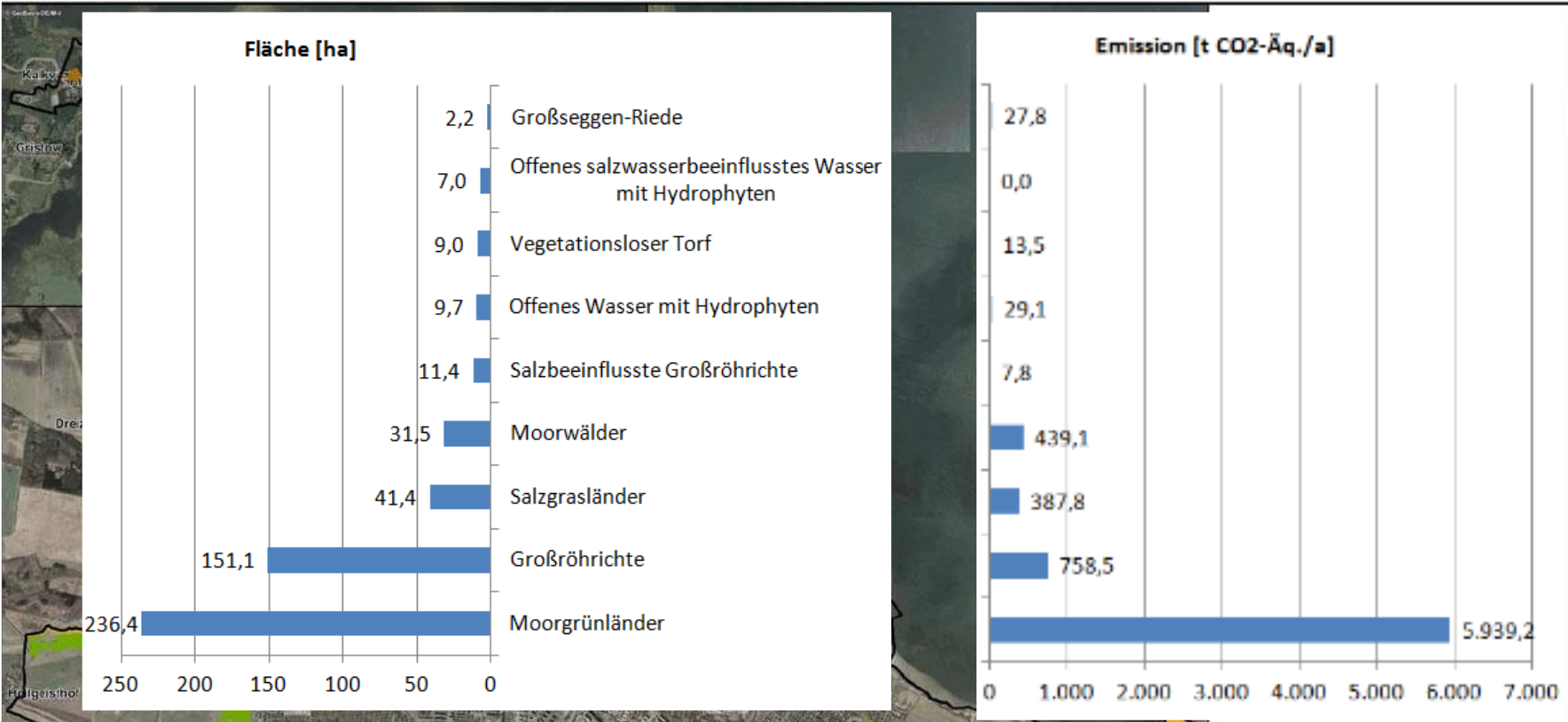
Koordinatensystem:
 WGS84 (UTM-Zone 33N)

Erstellt mit ArcGIS 10.4.1.
 Alle Rechte vorbehalten.



Vegetationsausprägung und Nutzungsformen

source: Greifswalder Moorstudie Reichelt & Lechtape 2019 (peatland study I)



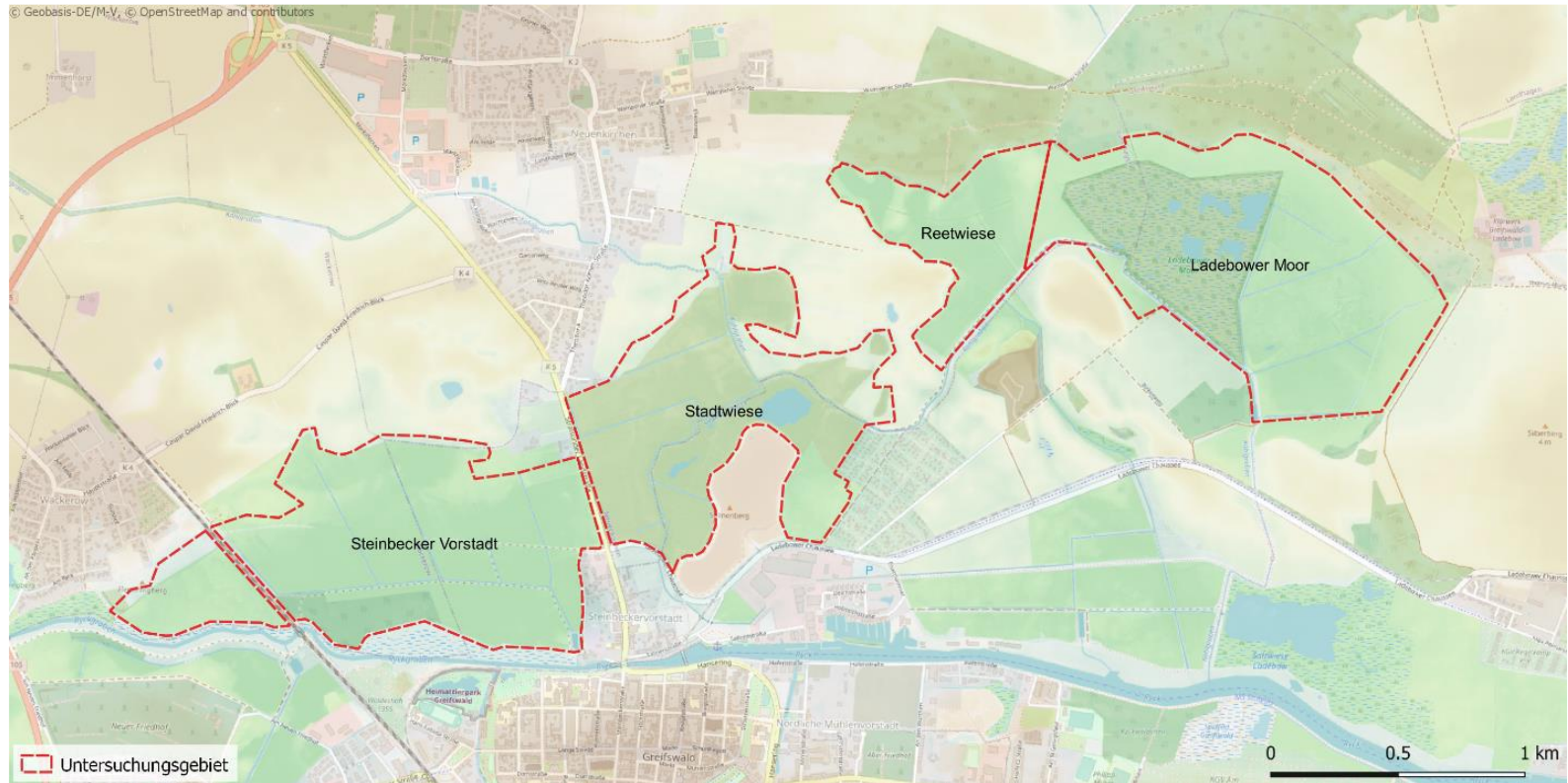
1 ha Grünland emits average
 20 t /ha/a
 = as much as 90.000 km 2x



LUNG:
 HGW,
 HGW/
 (WMS)

ter

Like pearls on a string...

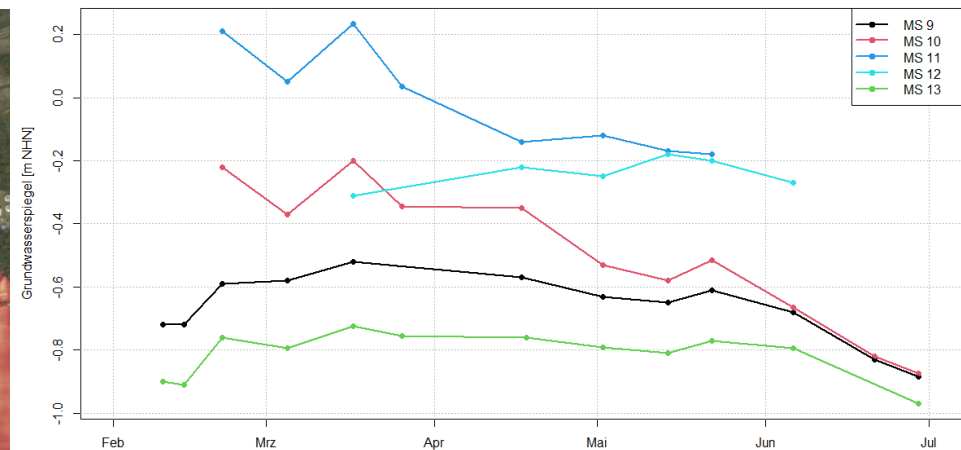
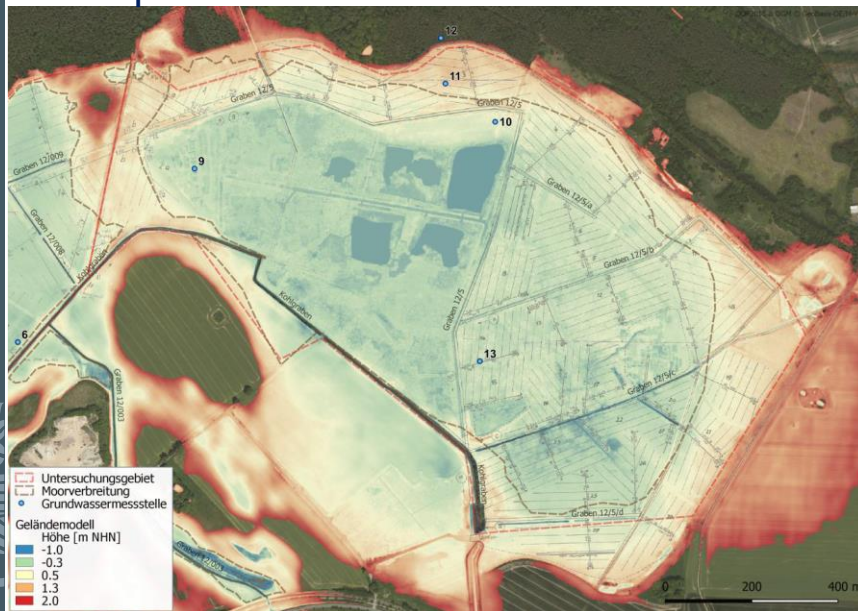


Map by biota „Potentialstudie zur Moorrevitalisierung“ (October 2021), on behalf of Michael Succow Foundation

Data acquisition and recommended measures



- Hydrological budget
- Models and known values completed by own measurements
groundwater-surface-distance
- all recommendations presuming a water table in surface level =
peat conservative



groundwater table measurements
february to june 2021 , Ladebower Moor

ground level modeled and
verification by own
measurements, correction



Ladebower Moor

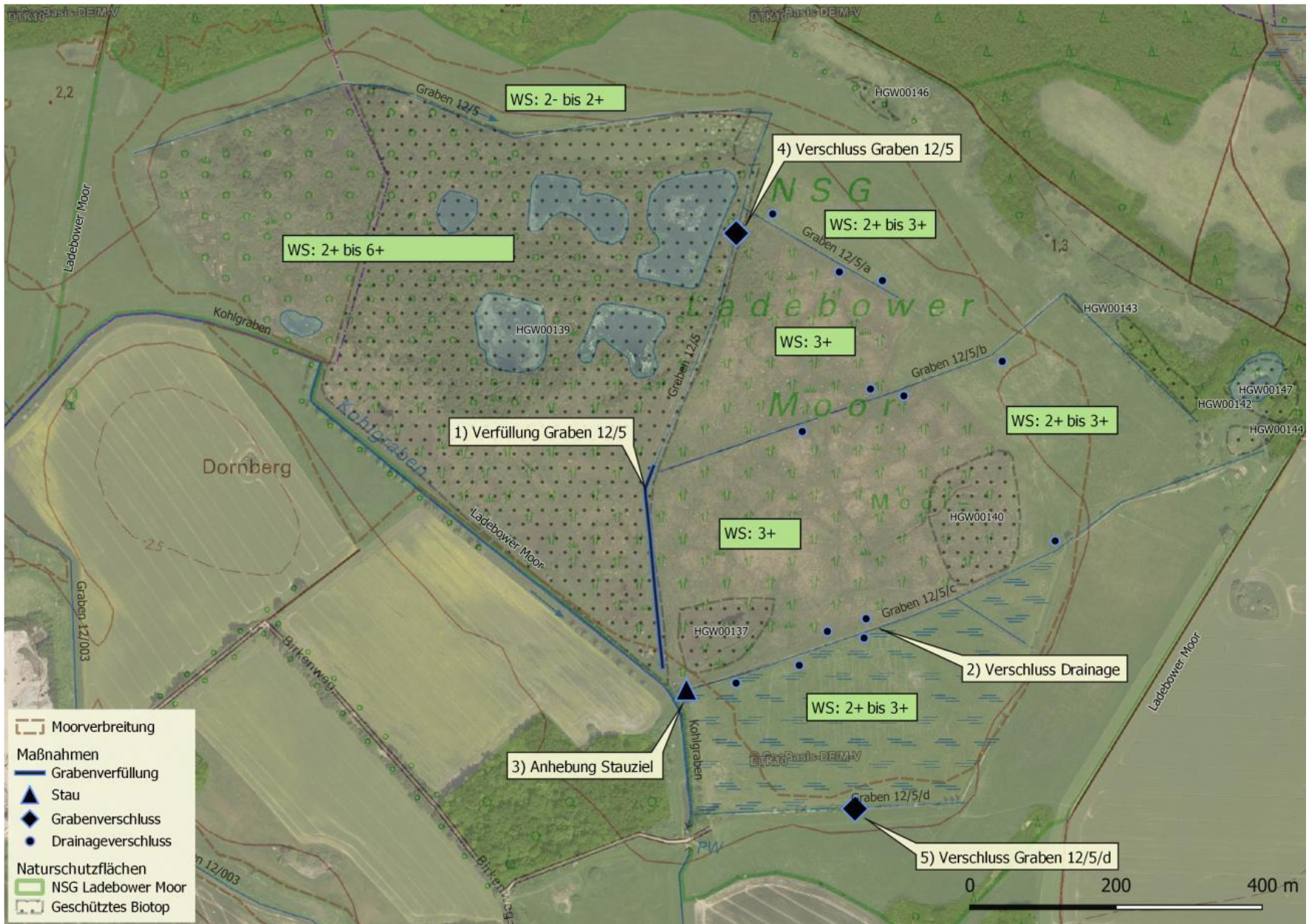
- 133 ha nature reserve since 1997
- former peat cutting area delivering energy from peat for salt refinery and brick manufacture
- drained until 1993

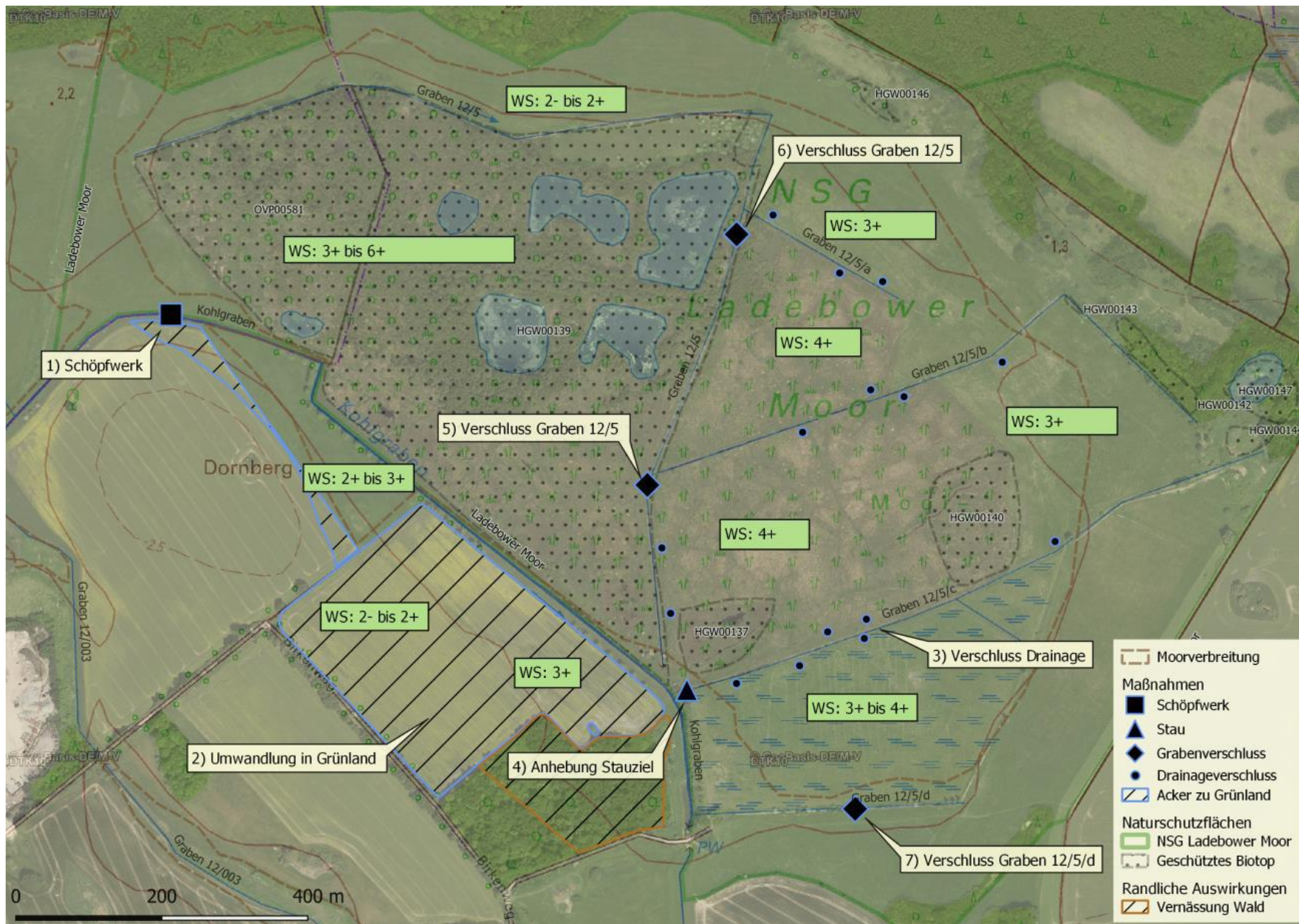
Affecting components

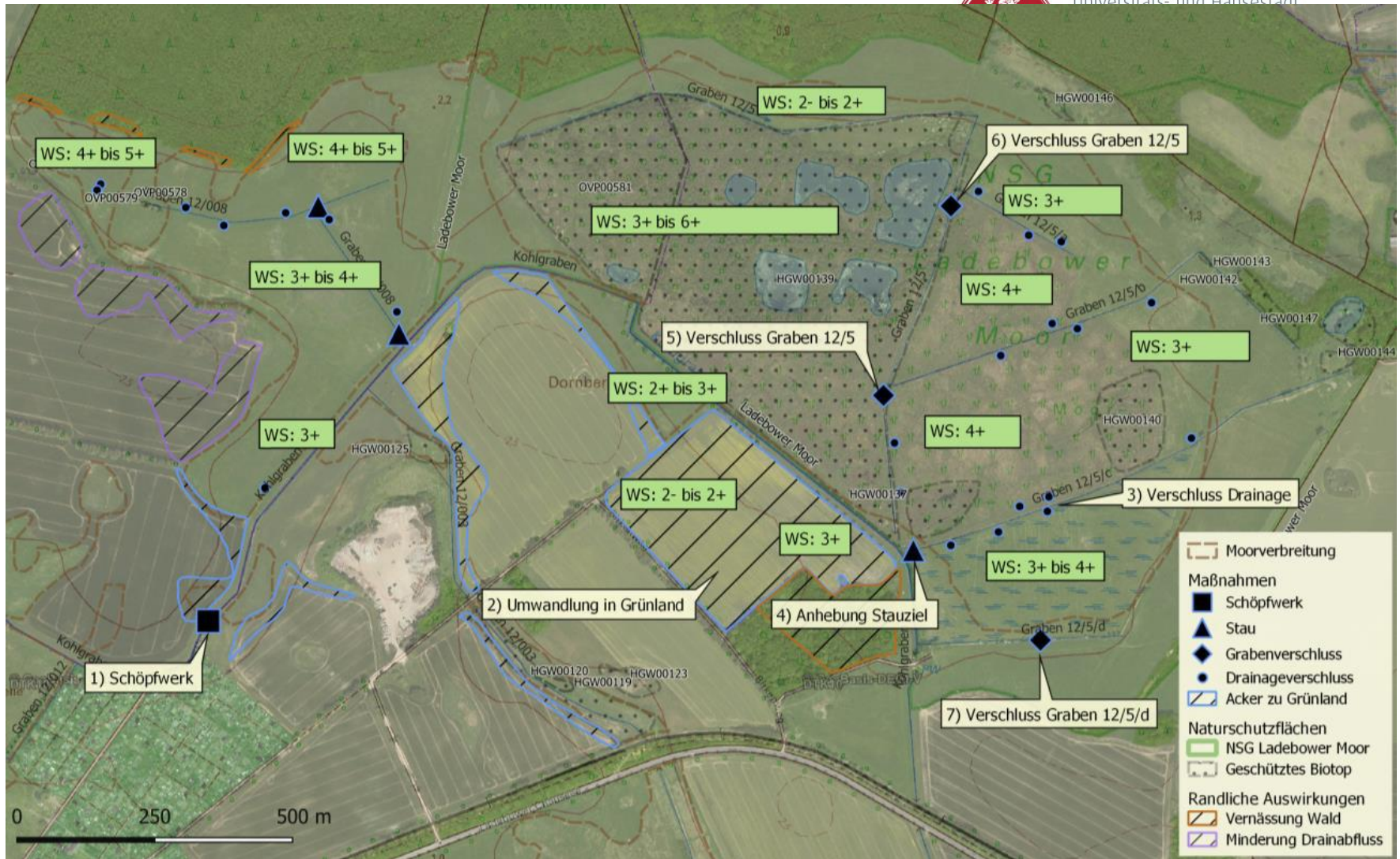
Reetwiese

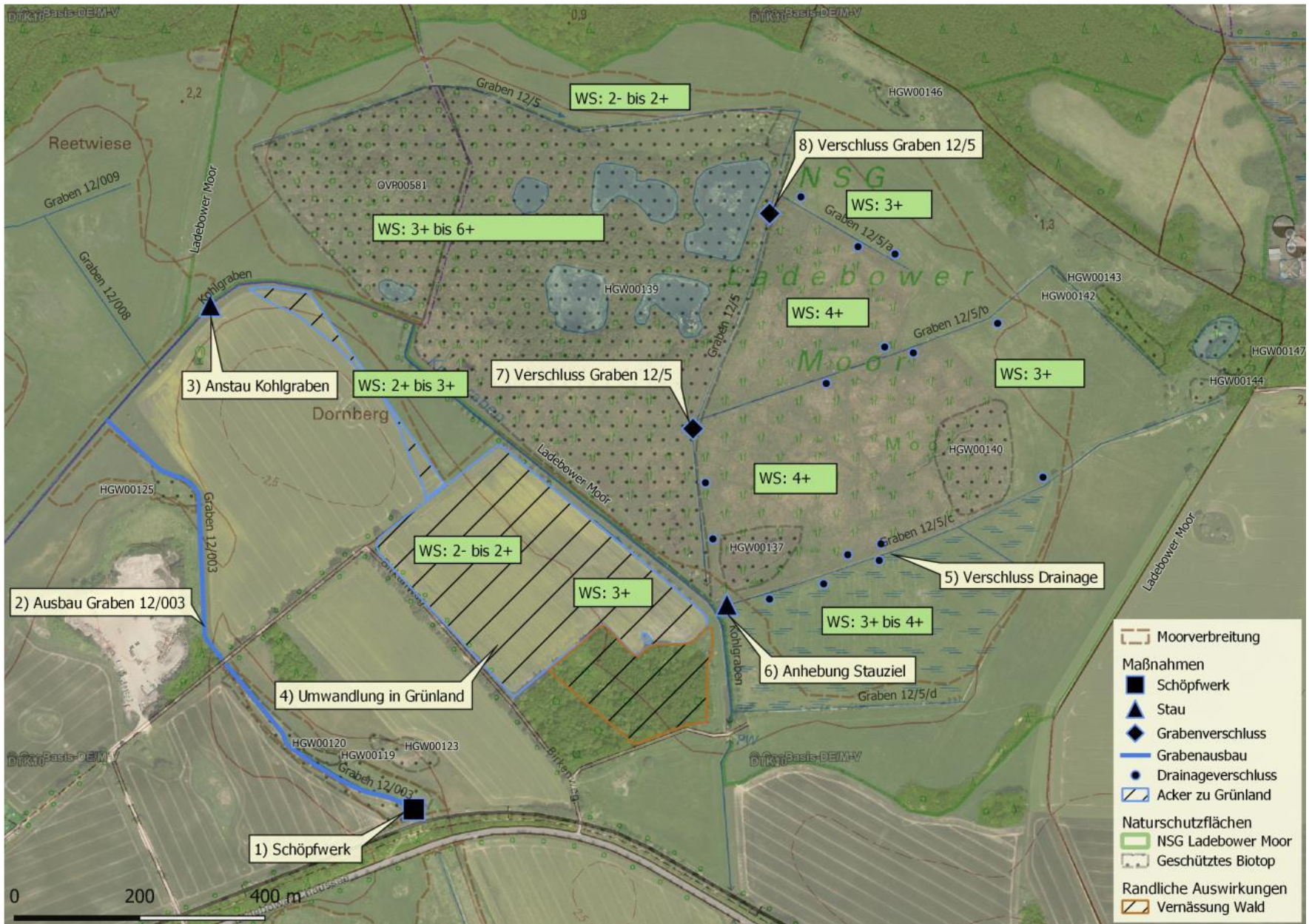
European law, german law, directives like Water Framework Directive, communal structure, ownership structure, site condition (height, drainage of adjoining agricultural fields, structure and type of drainage itself, ...not even having asked for the money)











Feasibility study



- provide information on effects of water
- recommendations of different possible constructions and their effects
- effects : on hydrology, protected biotops, possible nature conservation conflicts, infrastructure and neighbouring properties
- estimate of coasts

Stadtwiese



Greiff's Waldt



Ansicht von Greifswald 1652, Matthäus Merian, Wikipedia

Polder Steinbecker Vorstadt





Saltwort, *Salicornia*, Polder Steinbecker Vorstadt, Inland salt place, natura 2000